



# For Sale

## 4.22-7.00 AC Industrial Land

### Four Lots with Frontage on Highway 46

Highway 46 Industrial Park  
Bon Aqua, Tennessee 37025

Ronnie Wenzler, SIOR

**p** 615.621.1100

**m** 615.414.8094

[rwenzler@realsitecommercial.com](mailto:rwenzler@realsitecommercial.com)

Madison Wenzler

**p** 615.621.1097

**m** 615.390.7941

[mwenzler@realsitecommercial.com](mailto:mwenzler@realsitecommercial.com)



**REALSITE**  
COMMERCIAL

### For Sale

4.22 - 7.0 AC Lots

4 Lots Available

### Development Opportunity

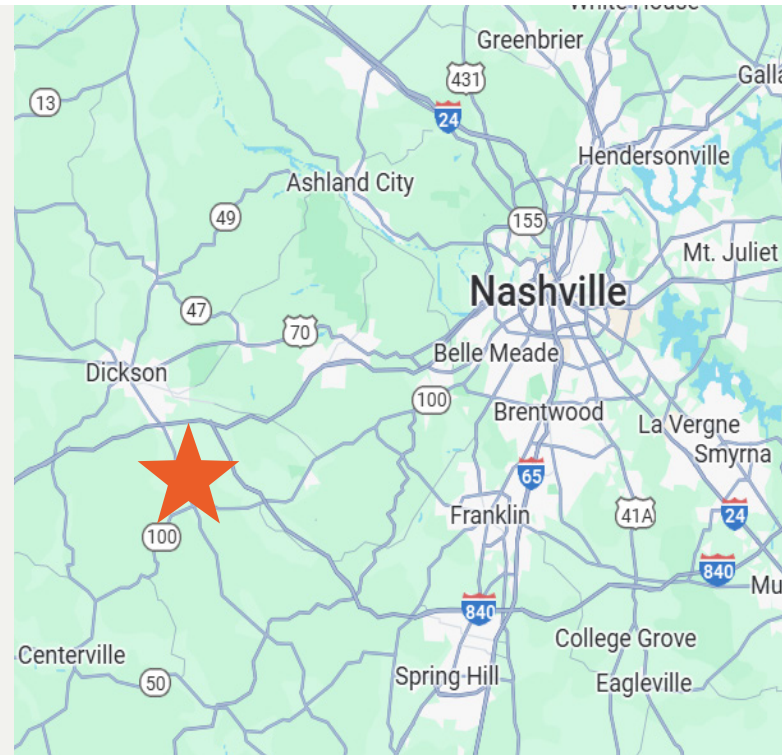
Highway 46 Industrial Park

Bon Aqua, TN 37025



## PROPERTY HIGHLIGHTS

- + **FOUR (4) LOTS AVAILABLE FOR PURCHASE**
  - Lot 2 - 4.22 AC (\$720,000)
  - Lot 4 - 7.0 AC (\$995,000)
  - Lot 6 - 4.27 AC (\$650,000)
  - Lot 7 - 6.4 AC (\$1,025,000)
- + **SITE OFFERS SIGNIFICANT FRONTAGE ON HWY 46 IN BON AQUA, TN**
- + **ZONED LIGHT INDUSTRIAL AND CAN BE REZONED COMMERCIAL**
- + **RAW LAND WITH FLAT TOPOGRAPHY**
- + **ALL LOTS HAVE WATER, SEWER, GAS, AND ELECTRICAL ACCESS**
- + **APPROXIMATELY 5 MILES FROM I-40**
- + **APPROXIMATELY 40 MILES WEST OF DOWNTOWN NASHVILLE**





**REALSITE**  
COMMERCIAL

**For Sale**

**4.22 - 7.0 AC Lots**

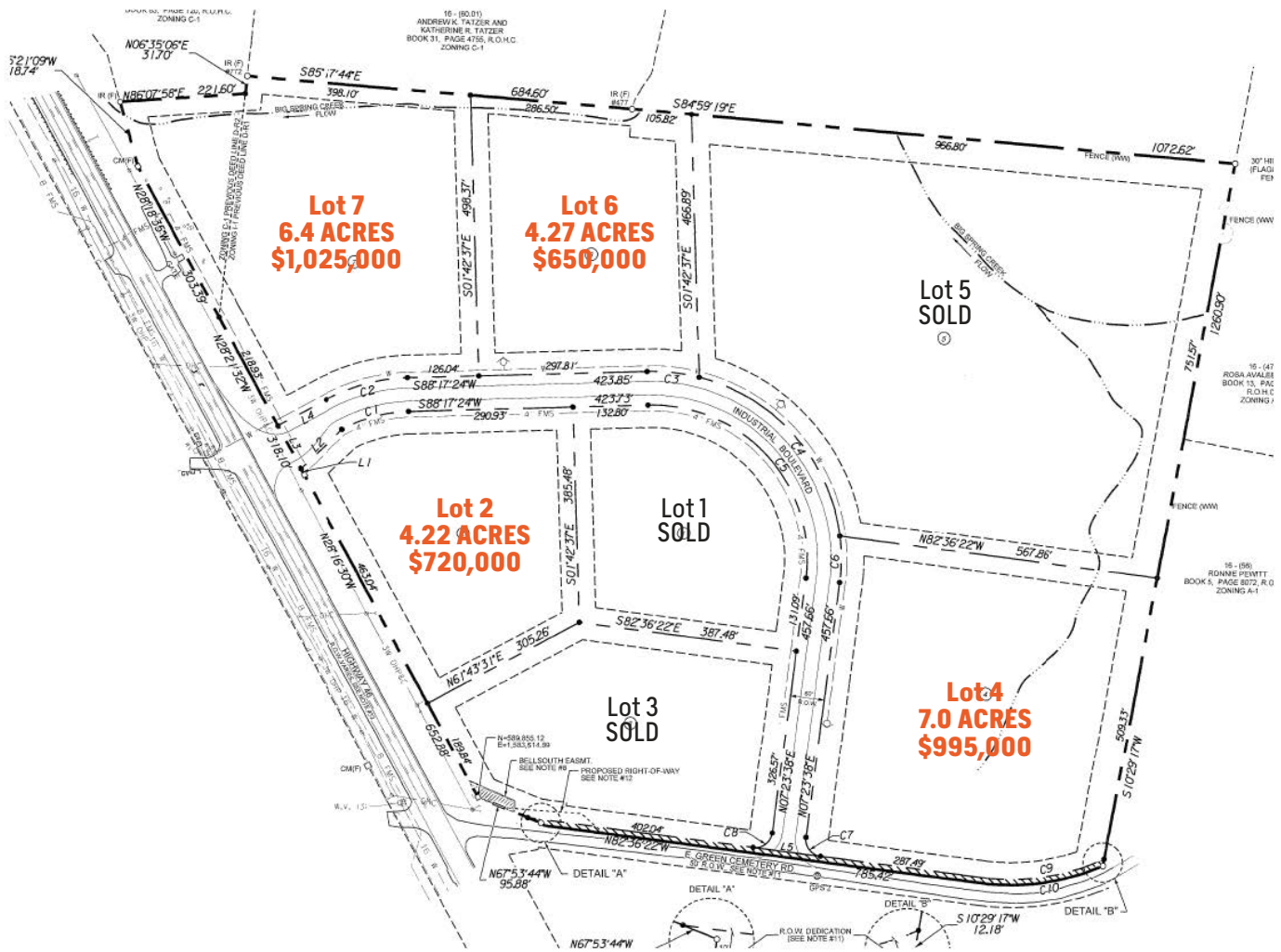
**4 Lots Available**

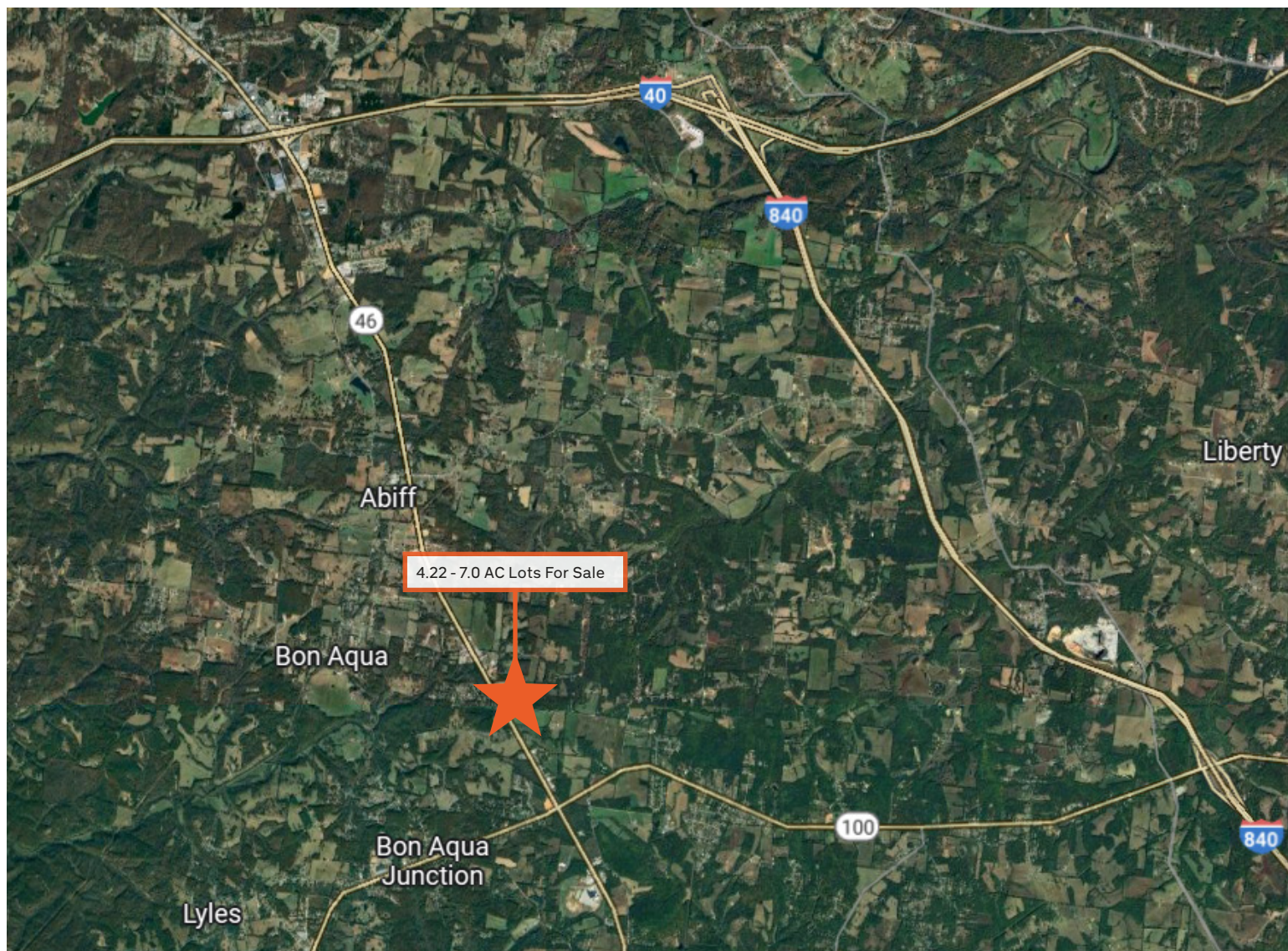
**Development Opportunity**

Highway 46 Industrial Park

Bon Aqua, TN 37025

## SITE PLAN





## CONTACT US

Ronnie Wenzler, SIOR

**p** 615.621.1100

**m** 615.414.8094

[rwenzler@realsitecommercial.com](mailto:rwenzler@realsitecommercial.com)

Madison Wenzler

**p** 615.621.1097

**m** 615.390.7941

[mwenzler@realsitecommercial.com](mailto:mwenzler@realsitecommercial.com)

©2025 Realsite. All rights reserved. The information contained in this communication is strictly confidential. This information has been obtained from sources believed to be reliable but has not been verified. NO WARRANTY OR REPRESENTATION, EXPRESS OR IMPLIED, IS MADE AS TO THE CONDITION OF THE PROPERTY (OR PROPERTIES) REFERENCED HEREIN OR AS TO THE ACCURACY OR COMPLETENESS OF THE INFORMATION CONTAINED HEREIN, AND SAME IS SUBMITTED SUBJECT TO ERRORS, OMISSIONS, CHANGE OF PRICE, RENTAL OR OTHER CONDITIONS, WITHDRAWAL WITHOUT NOTICE, AND TO ANY SPECIAL LISTING CONDITIONS IMPOSED BY THE PROPERTY OWNER(S). ANY PROJECTIONS, OPINIONS, OR ESTIMATES ARE SUBJECT TO UNCERTAINTY AND DO NOT SIGNIFY CURRENT OR FUTURE PROPERTY PERFORMANCE.