



For Lease

145,000 SF

Industrial Warehouse / Food Grade Manufacturing Space

660 Massman Drive
Nashville, TN 37210

Ronnie Wenzler, SIOR

p 615.621.1100

m 615.414.8094

rwenzler@realsitecommercial.com

Madison Wenzler

p 615.621.1097

m 615.390.7941

mwenzler@realsitecommercial.com

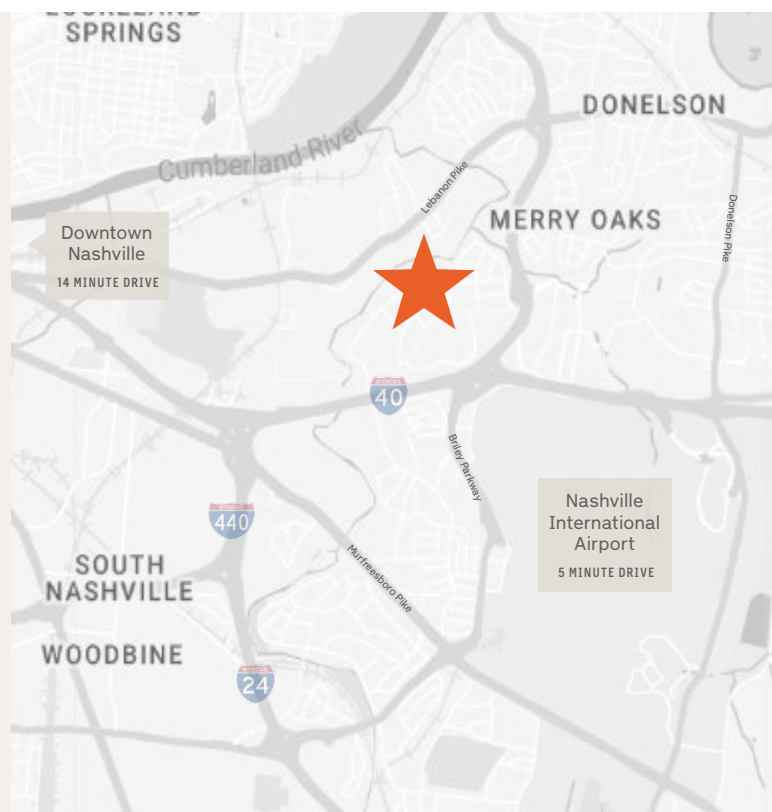


PROPERTY OVERVIEW

660 Massman Drive, Nashville, TN 37210 is a commercial property available for lease in Davidson County. The property sits on an 8.0-acre lot and offers $\pm 170,800$ SF of industrial space, $\pm 145,000$ SF of which is currently vacant. Zoned Industrial Restrictive (IR), this facility is ideal for heavy manufacturing and other industrial uses and is a food grade space.

The property is just a 5-min drive to Nashville International Airport, making it a strategic hub for logistics and distribution, and only 15-min from downtown, providing easy access to the city's core.

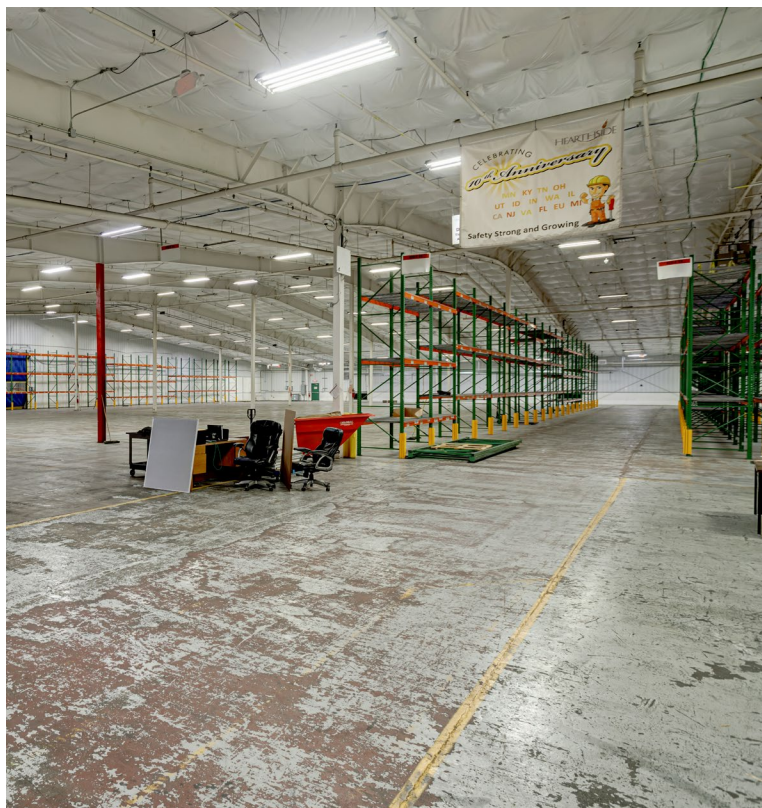
This large, versatile space is well-suited for industrial purposes, offering flexibility for significant warehousing and manufacturing operations.

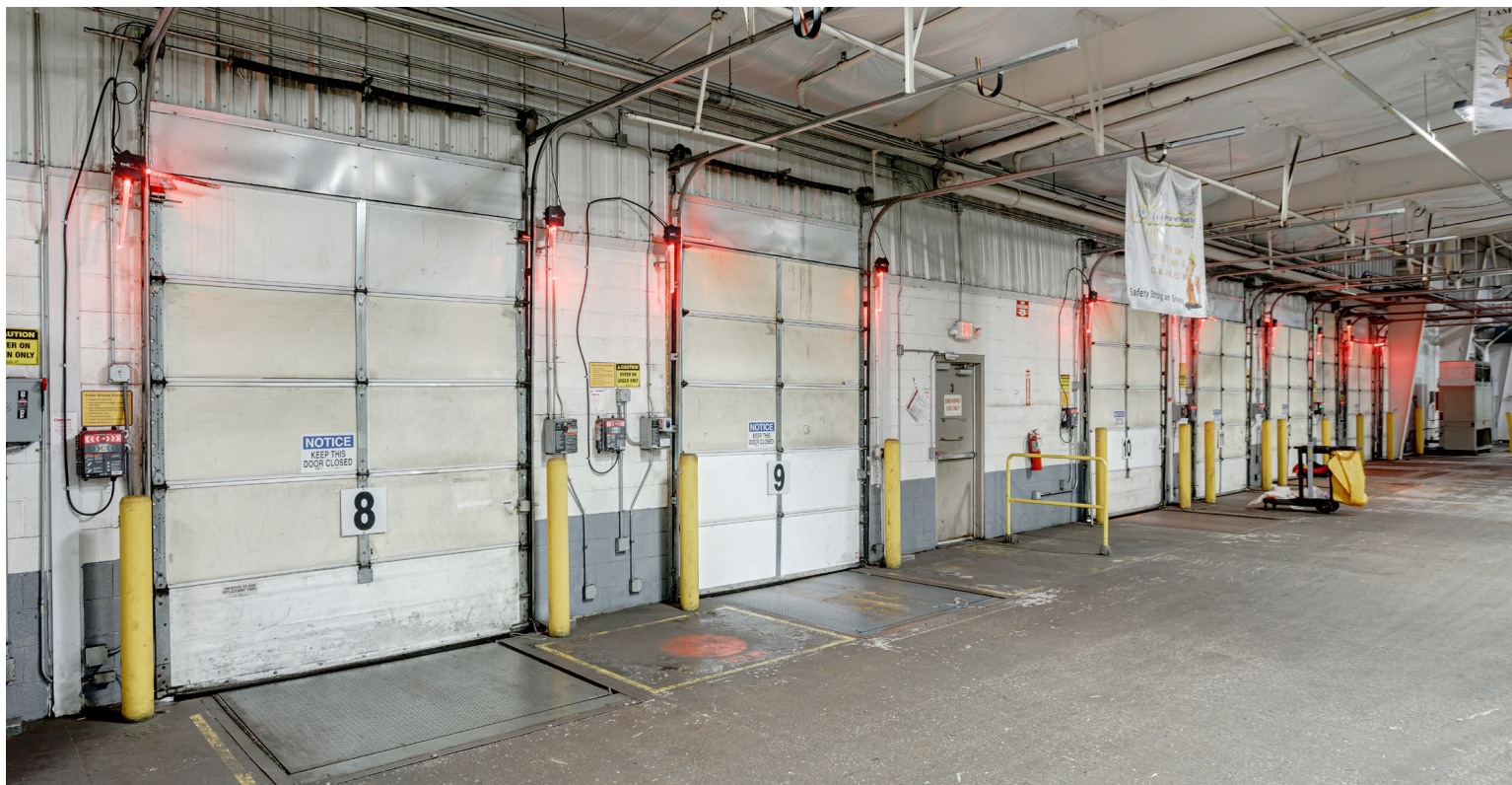




PROPERTY DETAILS

ADDRESS	660 Massman Drive, Nashville, TN 37210
LEASE RATE	\$7.95/SF NNN
COUNTY	Davidson County
AVAILABLE SQUARE FEET	± 145,000 SF
SPACE USE	Warehouse / Manufacturing / Food Grade Space
CLEAR HEIGHT	11'3" - 35"
SIZE SIZE	± 8.0 Acres
ZONING	Industrial Restrictive with an Airport Overlay
ELECTRICAL	1,600 Amp, 3 Phase Power
YEAR BUILT	1968
HEAT	Gas
HVAC	100% Air-Conditioned Space
SPRINKLERS	Fully Sprinklered







CONTACT US

Ronnie Wenzler, SIOR

p 615.621.1100

m 615.414.8094

rwenzler@realsitecommercial.com

Madison Wenzler

p 615.621.1097

m 615.390.7941

mwenzler@realsitecommercial.com